



**ENTRY INSTRUCTIONS FOR THE 2025 ARMBRUSTER**  
**Verein Deutsch-Drahtaar Group North America**  
**23rd International Armbruster Zuchtprüfung**  
**22-25 October, 2025**  
**Sparta, Illinois**

Email completed entries to:  
Mike Fortner, GNA Breedwarden  
Email: [thedrahthaardarklord@gmail.com](mailto:thedrahthaardarklord@gmail.com)  
Phone: 423.483.4496

Questions? Contact the Test Director!  
Jason Abbas, Test Director  
Email: [abbasjd89@gmail.com](mailto:abbasjd89@gmail.com)  
Phone: 515.229.4294

Entries must be received by September 22, 2025 (the entry deadline) and include the following:

NOTE: Your entry packet must be sent electronically. All forms below must be PDF scanned (no pictures, no phone app created PDF files) and emailed to GNA Breedwarden. Payment receipt must be forwarded to GNA Breedwarden. All forms must be clear and high quality.

1. Signed Formblatt 1 (Most Recent Version).
  2. Scans of both sides of dog's Ahnentafel.
  3. The pre-eval form, completed and signed by appropriate Judges AND Handler.
  4. Entry fee paid online via GNA webstore.
  5. Scan of the dog's VJP Formblatt 3 (score sheet) and scan of any other JGHV test that the dog may have completed.
- \*\*\*\*\* IF THE DOG ENTERS A HZP PRIOR TO THE ARMBRUSTER (PASS OR FAIL), YOU MUST IMMEDIATELY EMAIL THE GNA BREEDWARDEN THAT FORMBLATT 5. \*\*\*\*\***
6. Scan of the dog's HN certificate returned and signed by the JGHV.
  7. Scan of the dog's HD, OCD, ED. Only send the RESULTS received from Germany with stamp and signature.

Items 1-5 MUST have been sent to the GNA Breed Warden not later than the entry deadline - September 22, 2025

\*\* A copy of the Formblatt 1 (entry form) and Ahnentafel must also be sent to Jason Abbas, the Test Director.

\* Application for the HN certificate MUST be submitted to the HN coordinator by August 1, 2025.

\* X-ray evaluation forms MUST be submitted to the HD coordinator by August 1, 2025

Only completed paperwork can confirm your entry. Entries are not complete until all of the required forms and certifications have been received by the GNA Breed Warden.

\* VDD -GNA reserves the right to limit entries, if necessary.

\* Entry Fee refund policy:

The GNA refund policy is specified in the GNA Rules of Procedure. However handlers who have submitted their Armbruster Test Entry and entry fee, whose dog subsequently does not receive a HD- frei or OCD-frei rating, will be eligible for a full refund.

# Armbruster 2025 Pre-Evaluation

Name of Dog \_\_\_\_\_

Name of Handler \_\_\_\_\_

Owner/Handler Chapter \_\_\_\_\_ ZB# \_\_\_\_\_

Whelp date: \_\_\_\_\_ Sex: \_\_\_\_\_

VJP Score: \_\_\_\_\_ Hare Score: \_\_\_\_\_

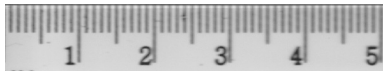
\* Owner **AND** Handler must be a member of the VDD

<b>Bite</b>	Scissors (4), Partial (5) Plier (6) <b>Over or under bite</b>
<b>Teeth Extra or Missing:</b>	
<b>Eyelids</b>	<b>Entropium (2)</b> , Close Lying (4), <b>Slightly open (5)</b> , <b>Ectropium (7)</b>
<b>Color of Iris</b>	<b>Glass-eye (2)</b> , <b>Variegated (3)</b> <b>Dark Brown (4)</b> Medium brown (5), Light Brown (6), Light (7)
<b>Muzzle</b>	Too (3) <b>Long (4)</b> , Medium Long (6), <b>Short (8)</b>
	Broad (2), <b>Medium Broad (4)</b> , Somewhat Narrow (6), <b>Narrow (7)</b> , Somewhat Pointed (8), <b>Pointed (9)</b>
<b>Backline</b>	Nearly Straight (5), <b>Straight (4)</b> Raised Lumbar - Slightly (6), Heavily (8) Roached Back - <b>Slightly (9)</b> , <b>Severely (11)</b> , With Distinct Indent (12), Overbuilt - Slightly (13), <b>Severely (15)</b> Swaybacked - <b>Slightly (16)</b> , <b>Severely (18)</b>
<b>Croup</b>	<b>Long (4)</b> , Medium Long (6), Short (8)
	Straight (2), <b>Slightly Sloping (4)</b> , Sloping (6), Steeply Sloping (8)
<b>Shoulder Angulation</b>	Too Much (2), <b>Correct (4)</b> , Somewhat Steep (6), Steep (8)
<b>Elbow Joints</b>	Turned in (2), <b>Straight (4)</b> , Turned out - Somewhat (5), <b>Severely (6)</b>
<b>Hind Legs</b>	Base Narrow (2), <b>Straight (4)</b> , Base Wide (6) Cow hocked - Somewhat (7), <b>Severely (9)</b> , Bow legged - Somewhat (10), <b>Severely (12)</b> Straight Stiffed (13)
<b>Rear Angulation</b>	Too Much (2), <b>Correct (4)</b> , Somewhat Steep (6), Steep (8)

**Guard Hair Length**

**Too Short (2): <1.8 cm**

**Too Long (6): >4.4 c**



**Height:** \_\_\_\_\_ **Length:** \_\_\_\_\_

Males: 61-68 cm. Females: 57-64

I understand this is a non-binding preliminary evaluation. No guarantees have been made or implied as to a final breed score. Furthermore I understand that even though my dog may receive a favorable preliminary evaluation, it may later not receive a ZR number, be disqualified from the Armbruster, and or, may ultimately be disqualified from breeding, without regard to the findings of this initial evaluation.

**Handler Signature** \_\_\_\_\_

Gunfire stable in water: **YES NO**

Freely enters water, swims, and searches without the presence of a duck or bumper. **YES NO**

**VR Signature** \_\_\_\_\_

<b>Guard</b>	<b>Too Short (2)</b> , Short (3), <b>Medium Long (4)</b> , Long (5), <b>Too Long (6)</b>
	<b>Dense (4)</b> , Medium Dense (6), <b>Thin (8)</b>
<b>Hair</b>	<b>Hard (4)</b> , Medium Hard (6), Soft (8), <b>wooly (10)</b>
	<b>Close Lying (4)</b> , Somewhat Open (6), Sticking Up (7), <b>Open (9)</b>
<b>Undercoat</b>	Dense (4), Middle Dense (6), Thin (8), <b>Missing (10)</b>
<b>Beard</b>	Redundant (3), Well Defined (4), Distinct (5), Just Distinct (6), <b>Too Little (7)</b> , <b>Missing (8)</b>
<b>Pigmentation</b>	<b>Very Good (4)</b> , Good (6), Poor (8)
<b>Walk</b>	<b>Long (4)</b> , Medium Long (6), <b>Short (8)</b> , Pacing - Part Time (9), Full Time (10)
<b>Trot</b>	<b>Long (4)</b> , Medium Long (6), <b>Short (8)</b> , Pacing - <b>Part Time (9)</b> , Full Time (10)
<b>Gallop</b>	<b>High and Far (4)</b> , Far (6), <b>Short (8)</b>
<b>Sex Type</b>	<b>According to Sex - Well Defined (4)</b> Not Fully Developed (6), <b>Opposite Sex Type (8)</b>
<b>Temperament</b>	Listless (2), <b>Well Balanced (4)</b> Self Controlled (6), Very animated (8), <b>Restless (10)</b> , <b>Nervous (12)</b>
<b>Character</b>	<b>Self Confident (4)</b> , Insecure (6), <b>Fearful (8)</b> , <b>Aggressive (10)</b> , <b>Fearbiter (11)</b>

Yellow is Armbruster disqualification. Red is breed disqualification.

**APPROVED NOT APPROVED**

**ZR Signature** \_\_\_\_\_

- Bite - all lower incisors must be correct and in contact with the upper incisors. Make sure to check all molars and premolars.
- Eyes - color of iris is the same within each eye and the same color for both eyes.
- Eyes - eyelids must be close lying.
- Backline - all roached back, severely overbuilt or swayback is DQ for the Armbruster. Heavily raised lumbar is questionable.
- Thin, wooly or open guard hairs are DQ. Sticking up guard hairs are questionable for the Armbruster.
- Missing undercoat is a DQ.
- Thin undercoat is questionable for the Armbruster.
- Too little or missing beard is a DQ for Armbruster.
- Pure white patches are a DQ.
- Pigmentation should be good or better.
- Opposite sex type is a DQ for Armbruster
- Restless, or Fearful dogs are a DQ for the Armbruster.
- Nervous, or aggressive dogs are a DQ. Dogs that are difficult to examine are questionable for the Armbruster.
- Short at any gait is a DQ for Armbruster.
- Any pacing at the trot is a DQ for Armbruster
- Pacing at the walk is fine.

Questions? Call GNA Breedwarden

423-483-4496